



*Bye-bye,
kiln sitter!*

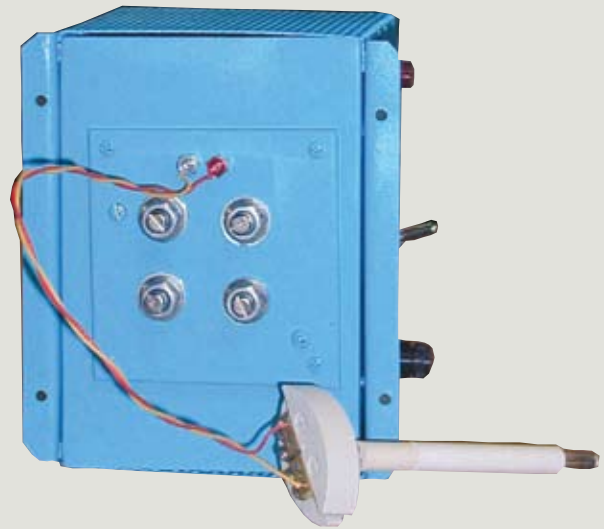
Introducing ...

ELECTRO SITTER

by



OLYMPIC KILNS



Electro Sitter will replace your obsolete kiln sitter model! It's easy, and best of all, parts are available! The Electro Sitter box is complete with thermocouple attached, and it has the option to fire either cone or ramp programs. The box will fit where the kiln sitter/timer are attached to the kiln. Simply remove the screws from the kiln sitter on front of the kiln, then detach wires connecting to the kiln sitter. Wires will be attached to the back of the Electro Sitter exactly as they were attached to the kiln sitter terminal block.



Kiln with kiln sitter



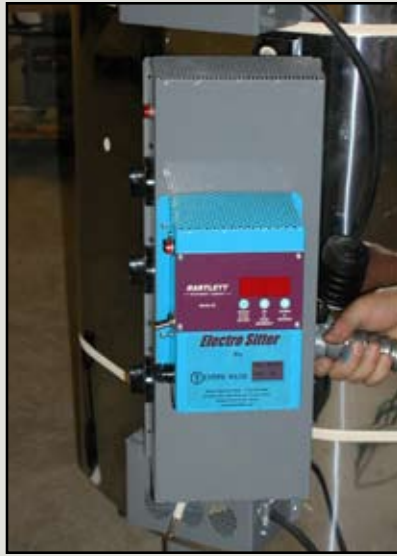
Detach screws from
kiln sitter plate



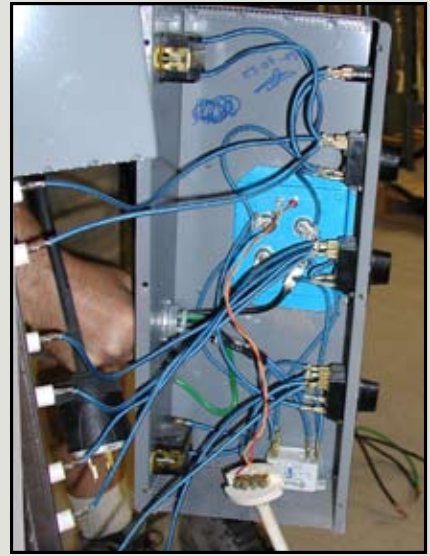
Remove wires from back of kiln sitter
terminal block



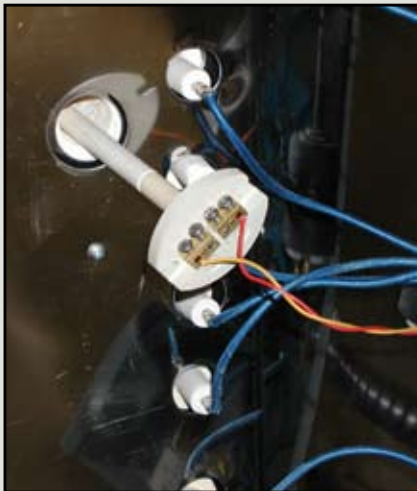
Electrical box without kiln sitter



Install Electro Sitter in the same location as the former kiln sitter plate.



Connect wires to back of Electro Sitter just like the connections to the back of the kiln sitter.



Insert thermocouple through kiln sitter hole



Thermocouple will show through brick wall at a maximum of 1". Pack kiln sitter hole with ceramic fiber to seal it.



Install electrical box back on kiln with Electro Sitter installed.

Read the Electro Sitter 3-key instruction manual. Turn switches to HIGH. Program your Electro Sitter and begin many happy firings!

Bye-bye, kiln sitter!



Each Electro Sitter comes with Type K thermocouple, ceramic fiber and instruction manual

\$425⁰⁰

50 Amps*
208-240 volts



*Higher amperages and 12-key controller available at additional charges.

Call your Olympic Kilns distributor to order TODAY!

www.greatkilns.com

Phone (800) 241-4400 • (770) 967-4009 • Fax (770) 967-1196