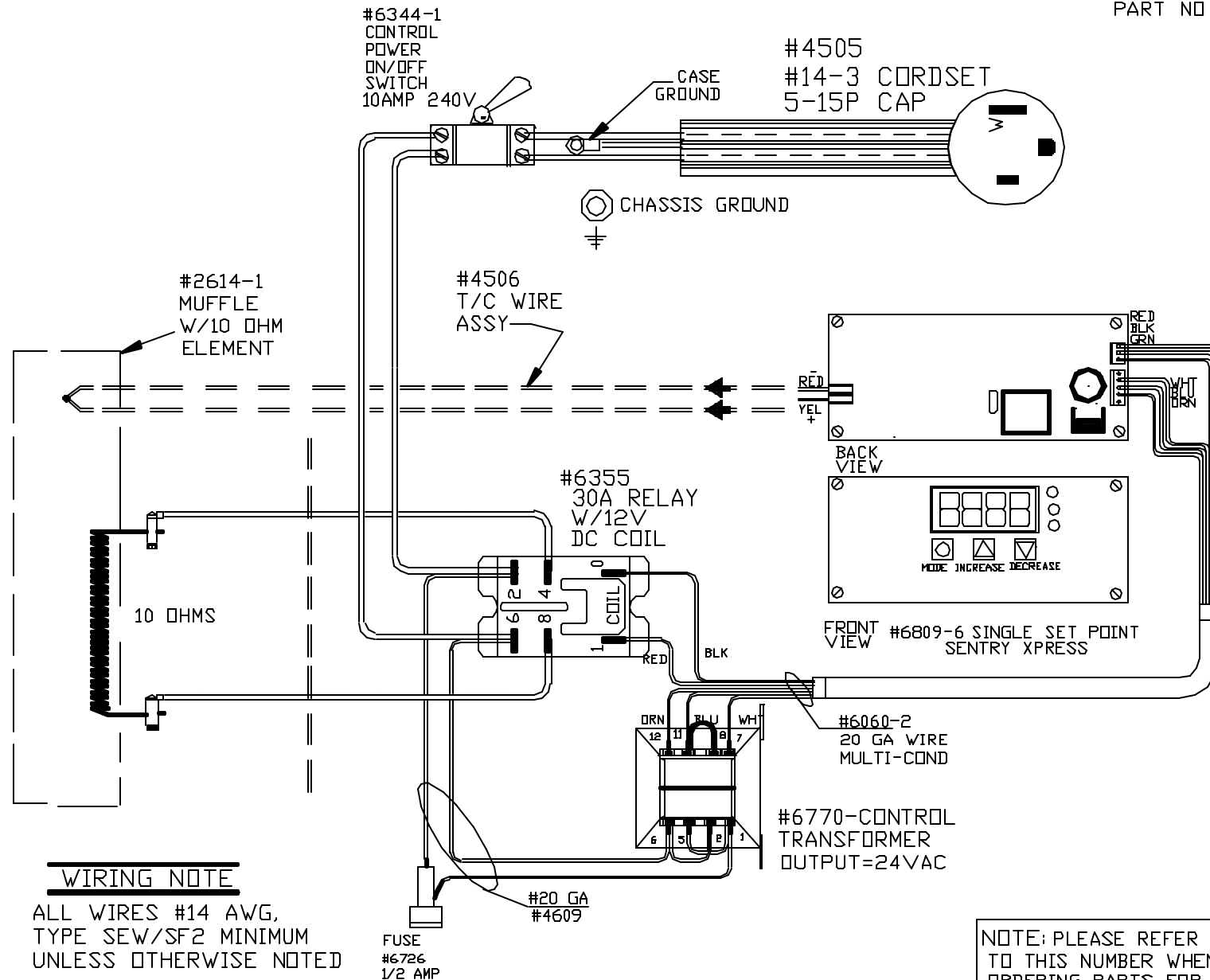


PART NO 0221131B00

POWER REQ'TS  
 120 VOLTS  
 1 PHASE  
 60 HERTZ  
 12 AMPS  
 1440 WATTS



WIRING NOTE

ALL WIRES #14 AWG,  
 TYPE SEW/SF2 MINIMUM  
 UNLESS OTHERWISE NOTED

FUSE  
 #6726  
 1/2 AMP

#20 GA  
 #4609

#6770-CONTROL  
 TRANSFORMER  
 OUTPUT=24VAC

NOTE: PLEASE REFER  
 TO THIS NUMBER WHEN  
 ORDERING PARTS FOR  
 THIS KILN

UL/CUL LISTED

PAINTED  
 STEEL CASE  
CATALOG STANDARD  
 2000°F

| REV | DATE     | BY  | DESCRIPTION                 |
|-----|----------|-----|-----------------------------|
| -   | 3-19-01  | RLG |                             |
| A   | 11/29/01 | DTB | CHG IN-LINE SV TO TOGGLE SV |
|     |          |     |                             |
|     |          |     |                             |

SWITCH BOX ASSY- 40847-1

PARAGON INDUSTRIES  
 2011 SOUTH TOWN EAST BLVD  
 MESQUITE, TEXAS 75149

WIRING DIAGRAM

120V ,1 PHASE ,60HZ ,1440WATTS

| PART NO          | REV  |
|------------------|------|
| 0221131B00       | A    |
| SC2 W/SEN-SSP BD | FILE |