

How To Replace The Whisper Controller



REQUIRED TOOLS

- 1.wire cutter (to cut zip tie)
2. zip tie
- 3.Phillips screw driver
- 4.Allen Wrench

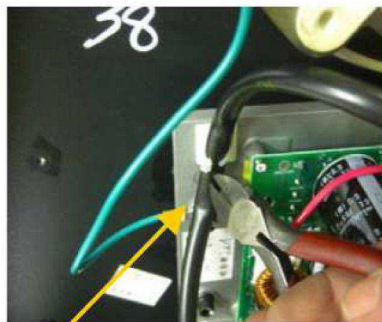


Part #: ARKA3400130
Whisper Controller

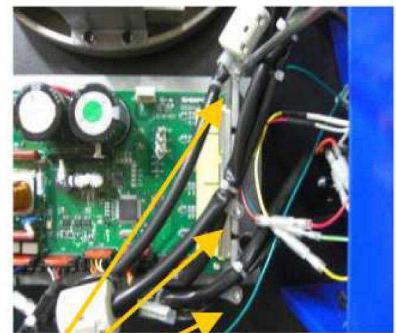
**Make sure your wheel is
Unplugged before you
start any repairs!**



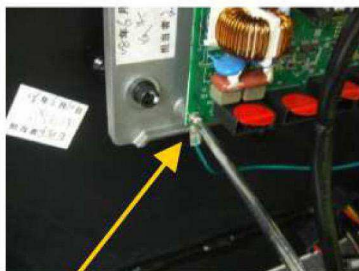
1.Remove the undercover by removing all undercover screws then sliding the undercover off.



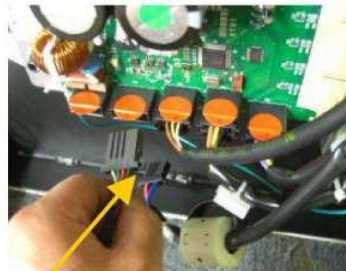
2.Cut the zip tie to release cables that are zip tied together.



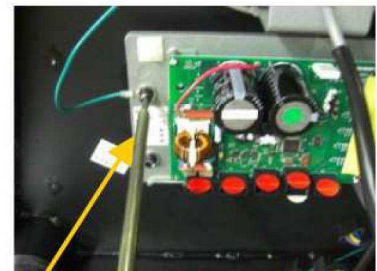
3.Unscrew the 3 cable holder.



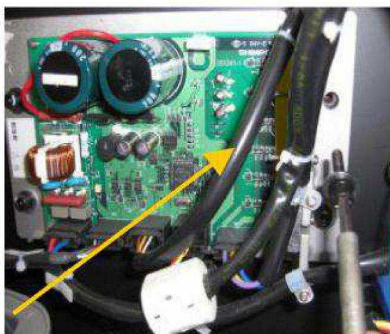
4.Unscrew the green ground wire.



5.Un-clip all 5 cables from the control board by squeezing the sides of the clip and pulling



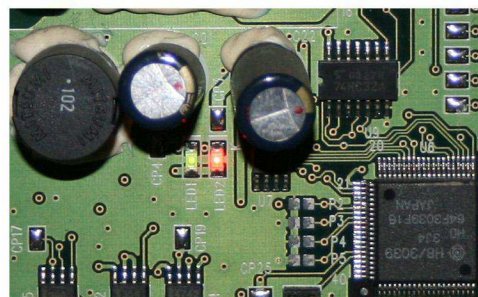
6. Unscrew all the mounting bolts, including the green ground wire to take off the controller



7. Install the new controller by mounting back onto the wheel. Remember to clip on all the wire harnesses and re-attach the ground wire.

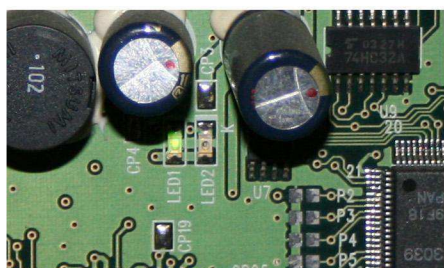


8. Plug the wheel back in and turn the power ON.

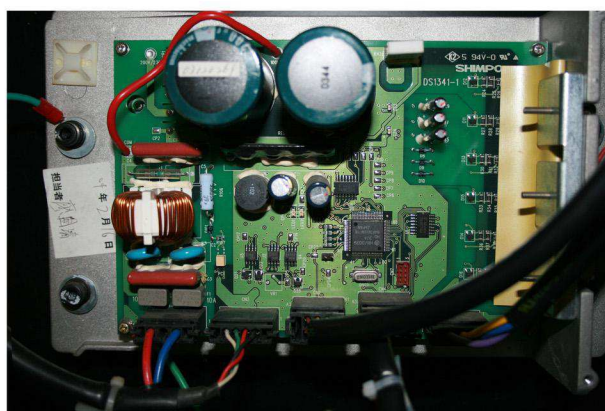


9. The controller should flash both lights at start up.

LED1 = **Green** LED2 = **Red**



10. Very shortly after, the LED2 **Red** will turn off and only LED1 **Green** will be flashing.



11. Make sure that all the parts are back in place. all wire harnesses are securely clipped in, the ground wire is fastened and the new controller is firmly screwed on. Finally, replace the blue undercover.