
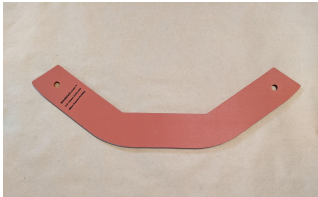
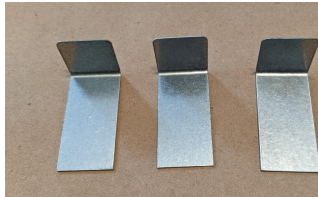

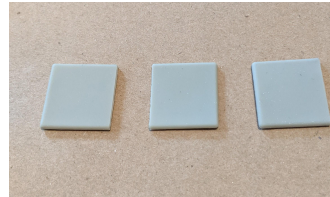




## Instructions For Standard Model KilnShield®

**Congratulations!** You have purchased an accessory for your kiln that will prevent deterioration and greatly increase its life, while putting less strain on your back when loading! We encourage you to read the full directions before you start assembling the KilnShield® and pay close attention to the “notes” we provide.

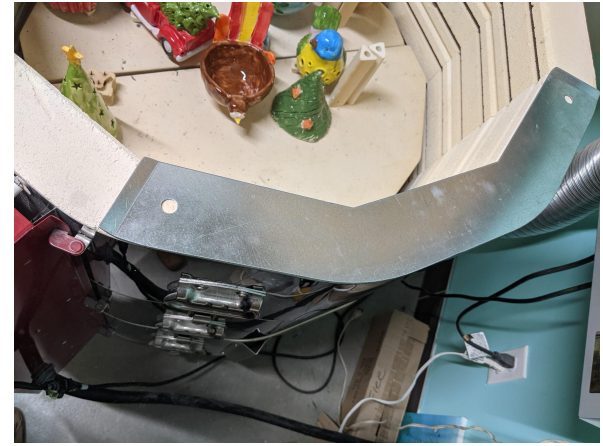
### Included in this kit:

1 Metal base	1 Silicone foam pad with adhesive backing	3 metal “L” tabs	VHB tape adhesive strips	3 silicone booties
				

**Note:** Before assembling, wipe the metal surfaces of the base and “L” tabs with a dry cloth or paper towel, to remove any manufacturing dust. KilnShield® can be customized to fit your particular kiln.

## 1. Aligning the base to the brick of the kiln.

With the kiln cool, place the metal base of the KilnShield® on the three bricks to be protected. Line up the two raised edges of the metal base with the two seams of the bricks (see below).

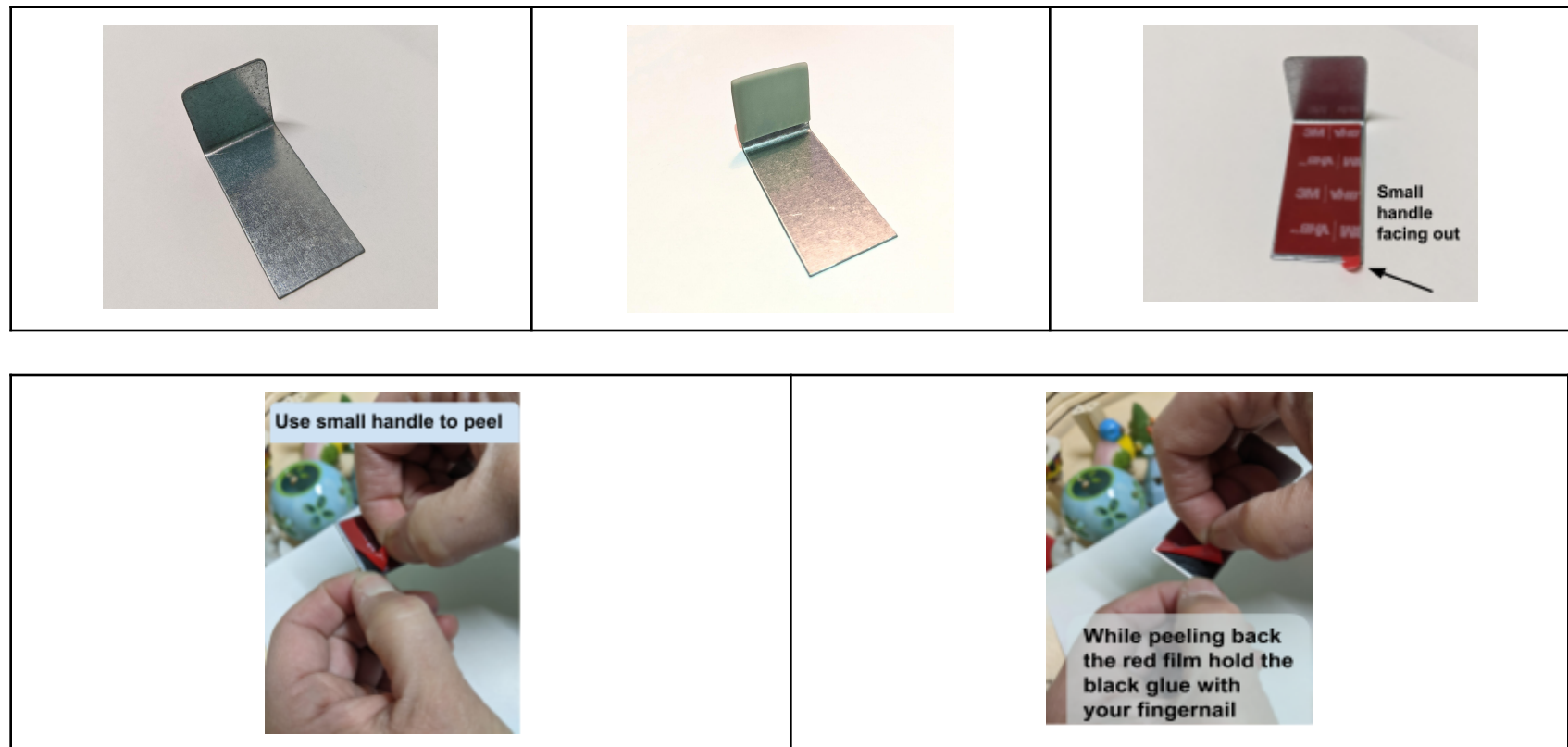


## 2. Attaching VHB adhesive strip (red) to the tabs

Place the “L” tab on a flat surface as shown in the photo, with the short side facing up. Insert the short side of the “L” tab in the silicone bootie, and repeat for the remaining two tabs.

**Note:** VHB tape is narrower and shorter than the tab.

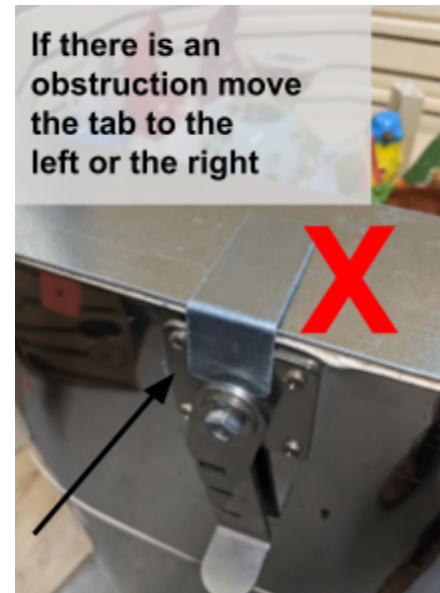
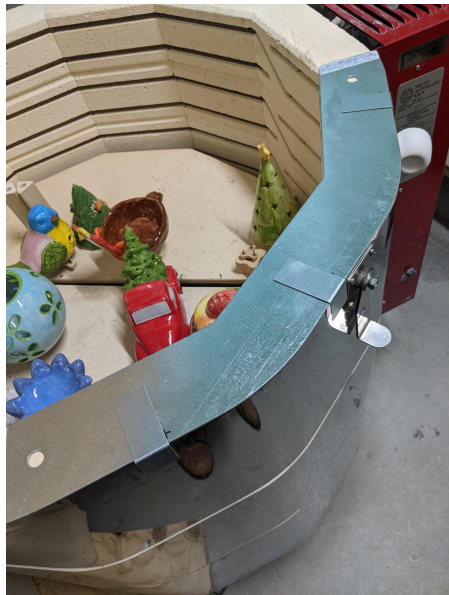
Place the VHB tape on the “L” tab as shown with a little bit of metal showing on the short side between the edge of the VHB tape and the edge of the tab. After the VHB tape has stuck to the “L” tab, press down on it to assure a good adhesive seal. Slowly remove the red plastic covering from the VHB tape on the tab by pulling the corner handle back and up. The corner edge of the VHB tape may want to stay on the red plastic covering, keep it in place with your fingernail as shown below.



### 3. Placing the “L” tabs to the metal base

Holding the base in place, put the bootied side of the tab flat against the outside of the kiln and slide it down pressing it onto the base to adhere the tab to the base. If there is an obstruction, move the “L” tab over to clear it by an inch or so. Repeat for the other two tabs. This is important to align the KilnShield® to the outside edge of the kiln, preventing it from moving during use. Press down on the tabs to ensure a good adhesive seal.

The “L” tab will bond to the metal base with 50% adhesion in 20 minutes, 90% in 24hrs, and 100% in 72hrs. Be mindful in the first 24hrs.



#### 4. Attaching silicone pad

Peel the film-backing from one side. Place the silicone on the base and align the hole in the silicone with the hole in the base.

Remove the remaining film-backing and place the silicone pad lightly on base aligning it with the inside and outside edges of the base. You can lift up on the silicone pad to align it to the metal base to make an accurate fit. Once you like the fit, press down on the foam to adhere it to the base. There may be some metal base exposed at the raised edges.

Your KilnShield® is now **complete!**

