

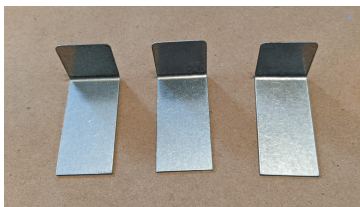

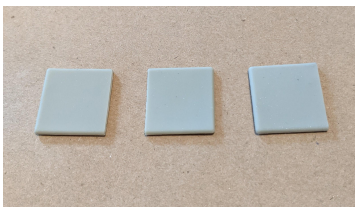




Instructions for Deluxe Model KilnShield®

Congratulations! You have purchased an accessory for your kiln that will prevent deterioration and greatly increase its life, while putting less strain on your back when loading! We encourage you to read the full directions before you start assembling the KilnShield® and pay close attention to the “notes” we provide.

Included in this kit:

2 metal bases hinged together	2 silicone foam pad with adhesive backing (marked left and right)	3 metal “L” tabs	VHB tape adhesive strips	3 silicone booties
				

Note: Before assembling, wipe the metal surfaces of the bases and “L” tabs with a dry cloth or paper towel, to remove any manufacturing dust. KilnShield® can be customized to fit your particular kiln. Determine which side of the KilnShield is your primary side. The primary side is the side in which the KilnShield® will be placed on the kiln first when using it. The primary side will have two of the three “L” tabs on it. The secondary side will be the side that opens up to cover the remaining bricks. The secondary side will only have one “L” tab.

1. Aligning the base to the brick of the kiln.

With the kiln cool, place the metal base of the KilnShield® on the six bricks to be protected. Line up the two raised edges of the metal base with the two seams of the bricks (see below). Determine which side is the primary side.

Align the primary side of the base with the kiln first then the secondary side. If the kiln is an older kiln the secondary side outside edge of the base may not line up with the kiln exterior edge exactly. Adjust the base equally on the left and right side.

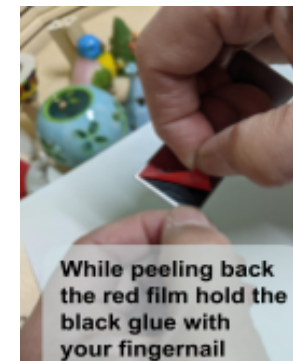
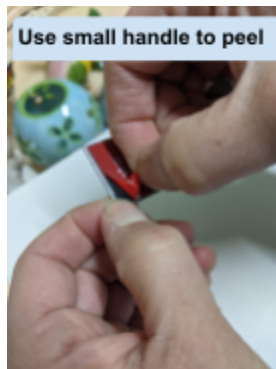
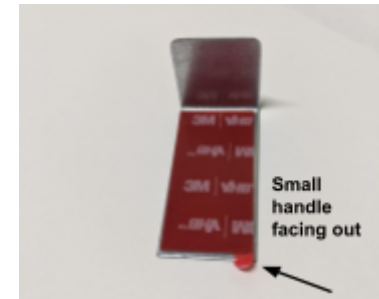
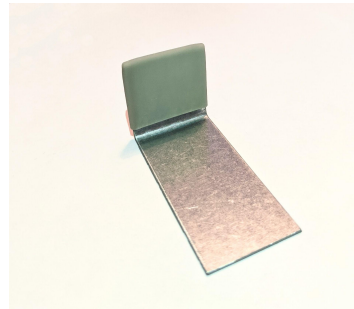
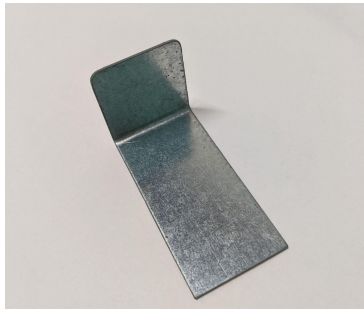


2. Attaching VHB adhesive strip (red) to the tabs

Place the “L” tab on a flat surface as shown in the photo, with the short side facing up. Insert the short side of the “L” tab in the silicone bootie, and repeat for the remaining two tabs.

Note: VHB tape is narrower and shorter than the tab.

Place the VHB tape on the “L” tab as shown with a little bit of metal showing on the short side between the edge of the VHB tape and the edge of the tab. After the VHB tape has stuck to the “L” tab, press down on it to assure a good adhesive seal. Slowly remove the red plastic covering from the VHB tape on the tab by pulling the corner handle back and up. The corner edge of the VHB tape may want to stay on the red plastic covering, keep it in place with your fingernail as shown below.

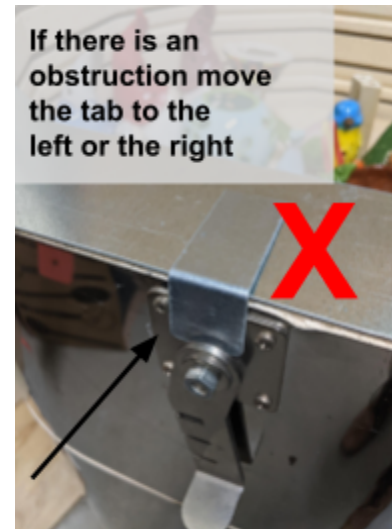


3. Placing the “L” tabs to the metal base

Starting on the left base (our primary side), place an “L” tab on the metal base in the center of the first side #1 and alternate sides (sides #1, #3, #5 left to right). If there is an obstruction, move the “L” tab over to clear it by an inch or so. If you plan to protect more than 6 bricks by moving the KilnShield® around the kiln, make sure where you place the “L” tab does not interfere with any obstruction in either use.

Holding the base in place, put the bootied side of the tab flat against the outside of the kiln and slide it down pressing it onto the base to adhere the tab to the base. Repeat for the other two tabs. This is important to align the KilnShield® to the outside edge of the kiln, preventing it from moving during use. Press down on the tabs to ensure a good adhesive seal.

The “L” tab will bond to the metal base with 50% adhesion in 20 minutes, 90% in 24hrs, and 100% in 72hrs. Be mindful in the first 24hrs.



4. Attaching silicone pad

Find the silicone pad marked “Left”. Peel the film-backing from the hinge side (right). Place the silicone on the base and align the hole in the silicone with the hole in the base.

Remove the remaining film-backing and place the silicone pad lightly on base aligning it with the inside and outside edges of the base. You can lift up on the silicone pad to align it to the metal base to make an accurate fit. Once you like the fit, press down on the foam to adhere it to the base. Repeat this process for the right side silicone pad. There will be some metal base exposed at the raised edges.

Your KilnShield® is now **complete!**

